

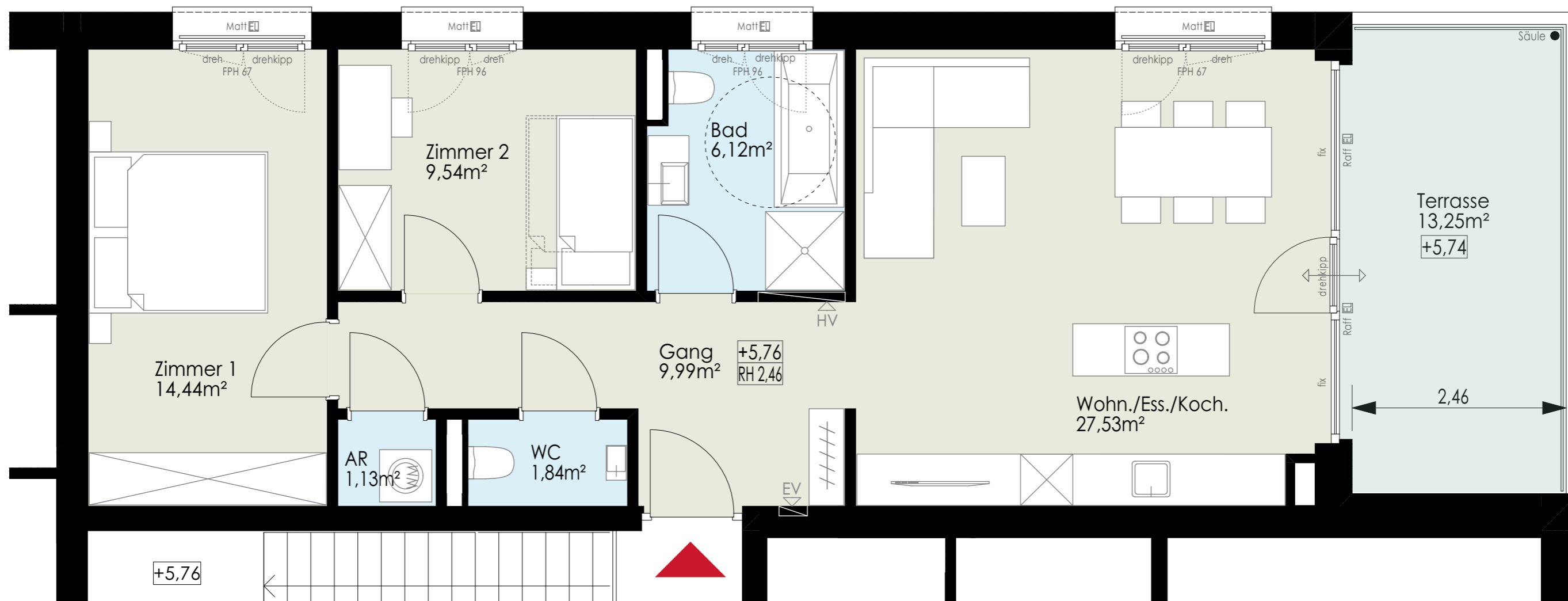


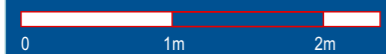
- Legende:
- HV - Heizverteiler
 - EV - Elektroverteiler
 - WM - Waschmaschine
 - AWH - Außenwasserhahn
 - Raff  - Raffstore elektrisch
 - Matt  - Markisoleffen elektrisch
 - RH - lichte Raumhöhe
 - FPH - fertige Parapethöhe (Brüstung)
 - ±0,00 - Höhenkote Fußboden



Haberl Baugesellschaft m.b.H
 Hohenemser Straße 17
 6890 Lustenau
 Tel. 0 55 77 8 64 69
 office@haberlbau.at
 www.haberlbau.at



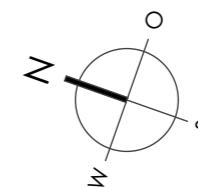
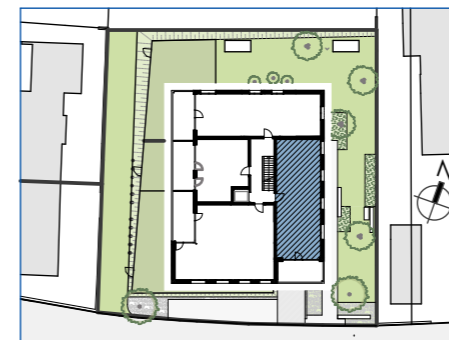
Maßstab: 1:50 Stand: Feb. 2024



Top W11

3 Zimmerwohnung
 2. Obergeschoss

Wohnfläche: 70,59m²
 Terrasse: 13,25m²



Wohnanlage
Steinacker
 Dornbirn