

Wohnanlage Steinacker Dornbirn

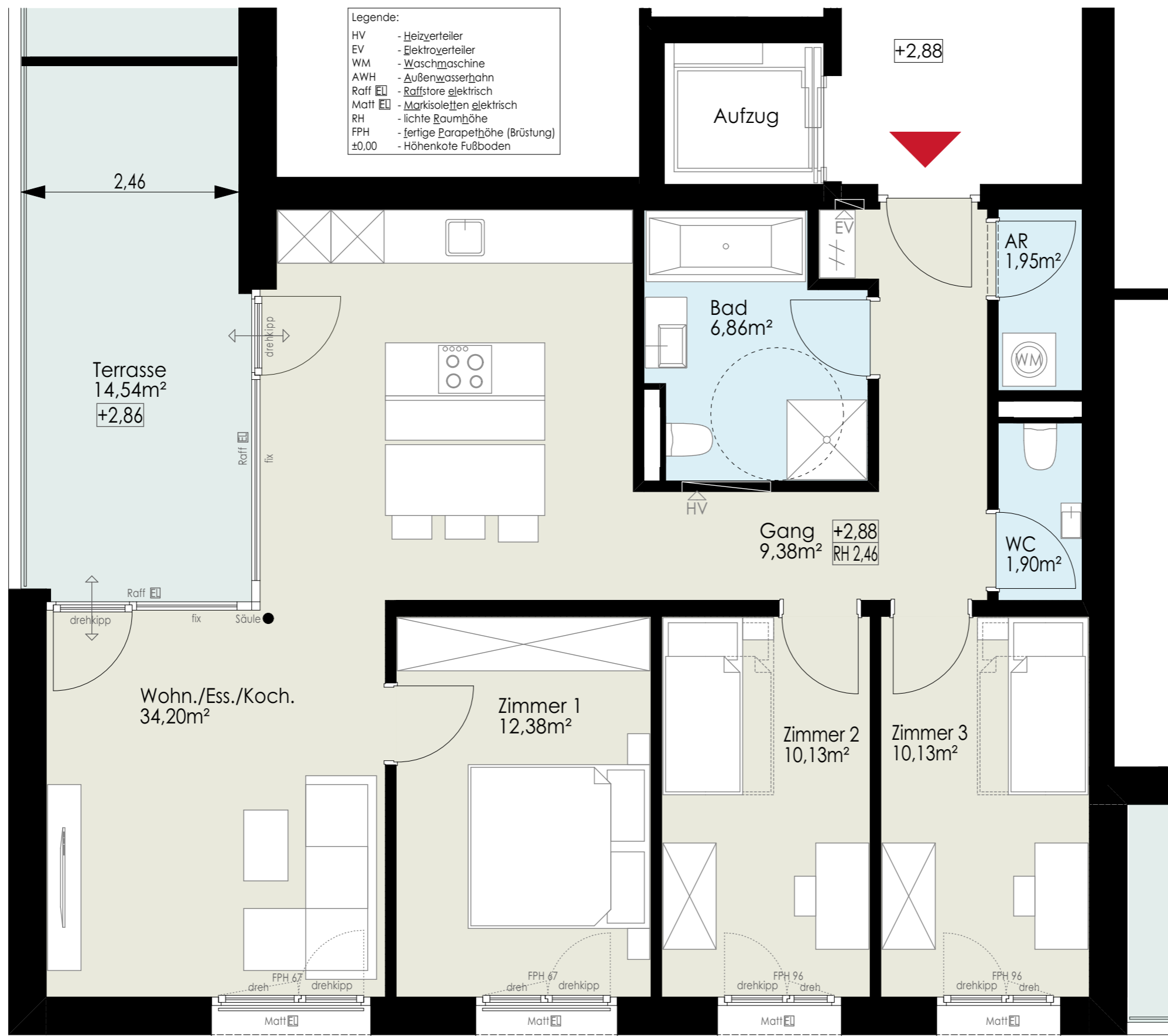
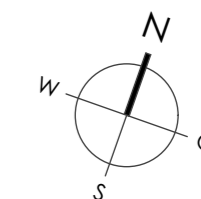
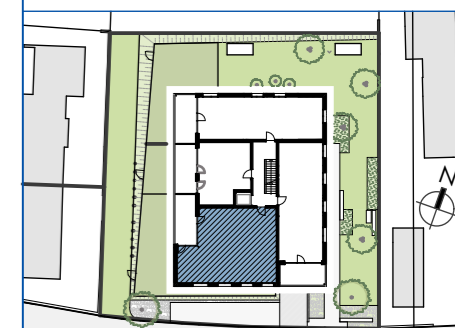
Maßstab: 1:50 Stand: Feb. 2024



Top W06

4 Zimmerwohnung
1. Obergeschoss

Wohnfläche: 86,93m²
Terrasse: 14,54m²



Haberl Baugesellschaft m.b.H
Hohenemser Straße 17
6890 Lustenau
Tel. 0 55 77 8 64 69
office@haberlbau.at
www.haberlbau.at

