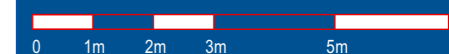


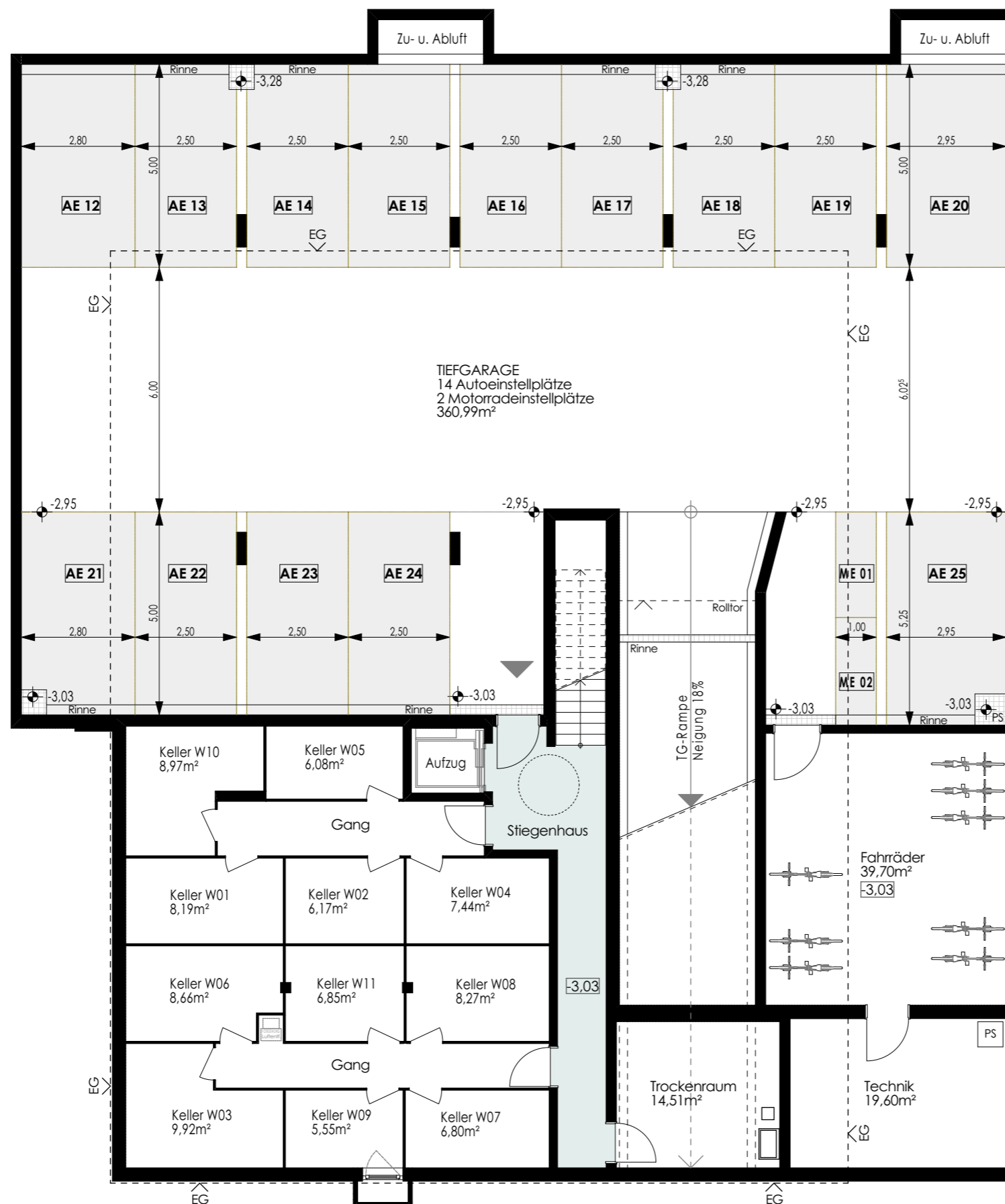
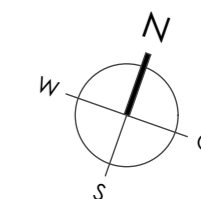
# Wohnanlage Steinacker Dornbirn

Maßstab: 1:125 Stand: Feb. 2024



## Untergeschosse

### Kellerabteile Tiefgaragen



Haberl Baugesellschaft m.b.H  
Hohenemser Straße 17  
6890 Lustenau  
Tel. 0 55 77 8 64 69  
office@haberlbau.at  
www.haberlbau.at

