

Quartier "Brunnenbach" Bludenz

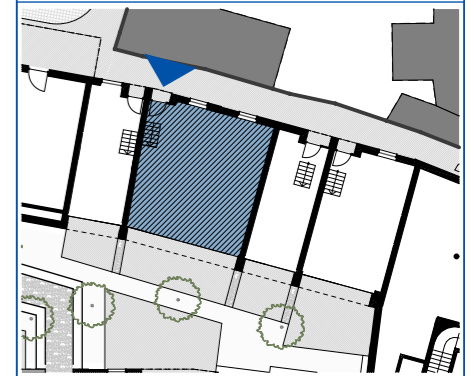
Maßstab: 1:75 Stand: April 2022



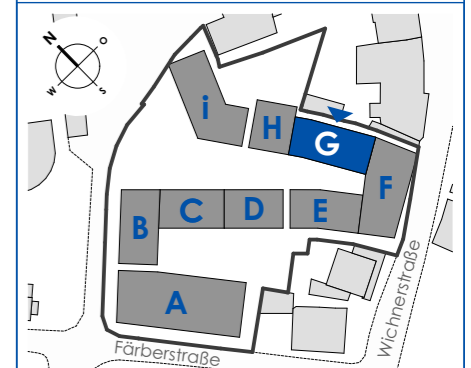
Top G-W41

3 Zimmerwohnung
Erdgeschoss - Hochparterre

Wohnfläche: 64,43m²
Loggia: 6,52m²
Terrasse: 17,38m²



Haus G



Haberl Baugesellschaft m.b.H
Hohenemser Straße 17
6890 Lustenau
Tel. 0 55 77 8 64 69
office@haberlbau.at
www.haberlbau.at

