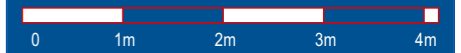


# Quartier "Brunnenbach" Bludenz

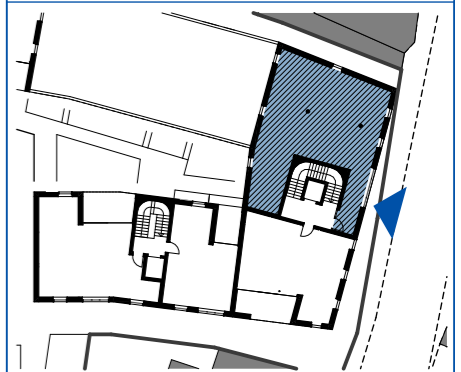
Maßstab: 1:75 Stand: April 2022



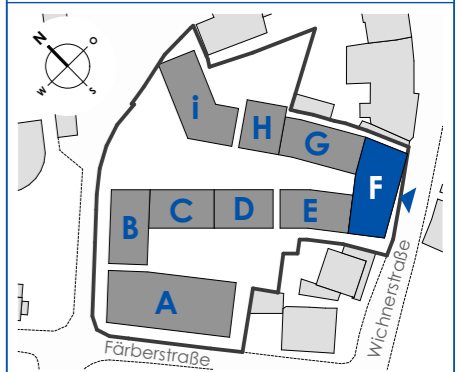
## Top F-G38

Bürofläche  
2. Obergeschoss

Gesamtfläche: 122,01m<sup>2</sup>



## Haus F



Haberl Baugesellschaft m.b.H  
Hohenemser Straße 17  
6890 Lustenau  
Tel. 0 55 77 8 64 69  
office@haberlbau.at  
www.haberlbau.at

