

Quartier "Brunnenbach" Bludenz

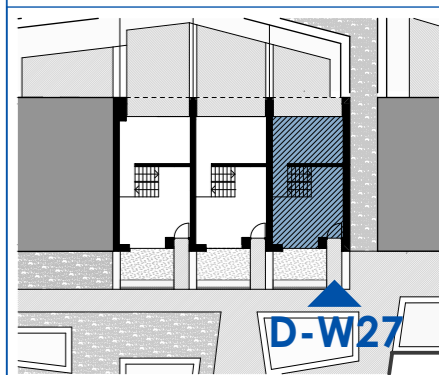
Maßstab: 1:75 Stand: April 2022



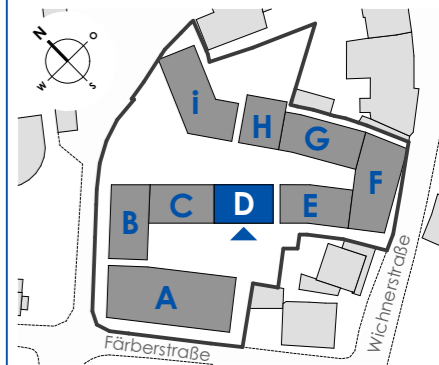
Top D-W27

Maisonette

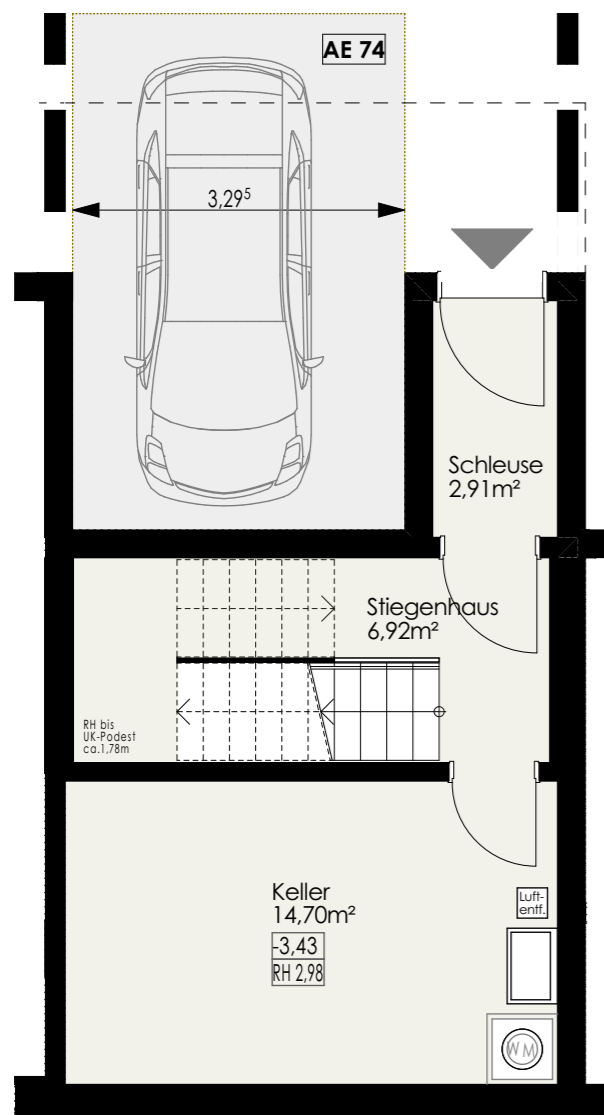
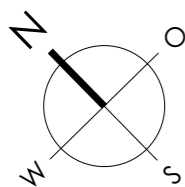
Wohnfläche:	71,12m ²
Untergeschoss:	24,53m ²
Dachterrasse:	33,54m ²
Loggia:	5,70m ²
Vorgarten:	~ 15,35m ²
Terrasse:	11,23m ²
Vegetationsfl.:	~ 8,39m ²



Haus D



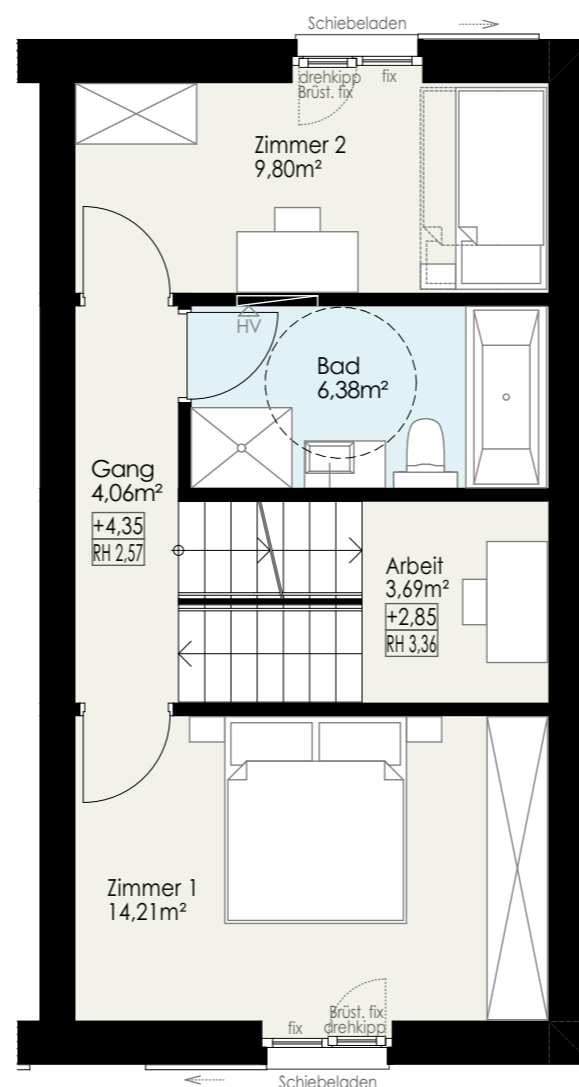
Haberl Baugesellschaft m.b.H
Hohenemser Straße 17
6890 Lustenau
Tel. 0 55 77 8 64 69
office@haberlbau.at
www.haberlbau.at



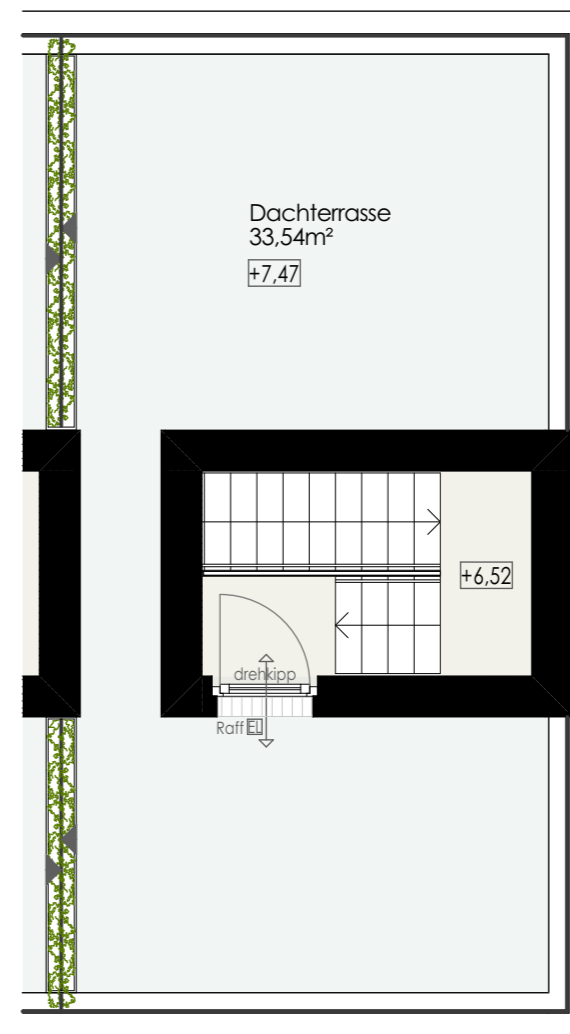
Untergeschoss: 24,53m²



Erdgeschoss: 32,98m²



Obergeschoss: 38,14m²



Dachterrasse: 33,54m²