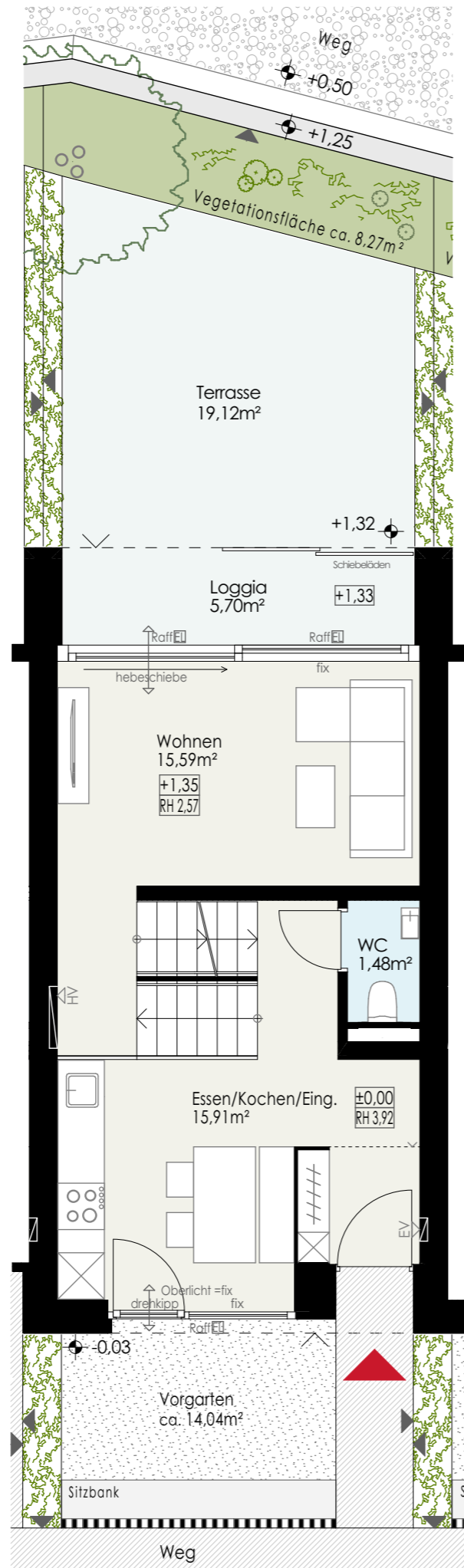
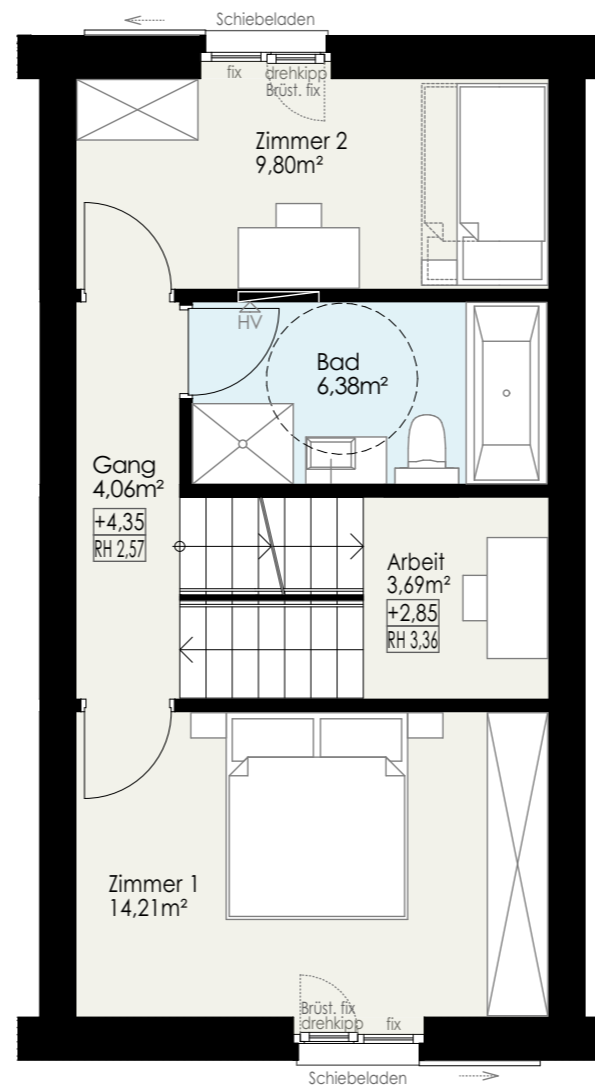


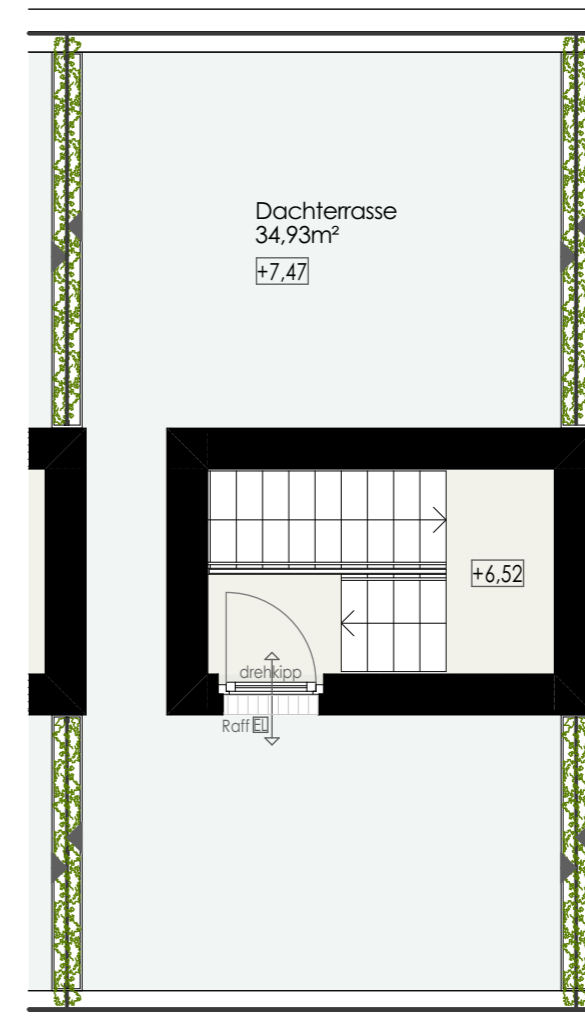
Untergeschoss: 23,96m<sup>2</sup>



Erdgeschoss: 32,98m<sup>2</sup>



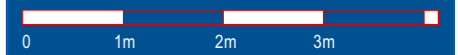
Obergeschoss: 38,14m<sup>2</sup>



Dachterrasse: 34,93m<sup>2</sup>

# Quartier "Brunnenbach" Bludenz

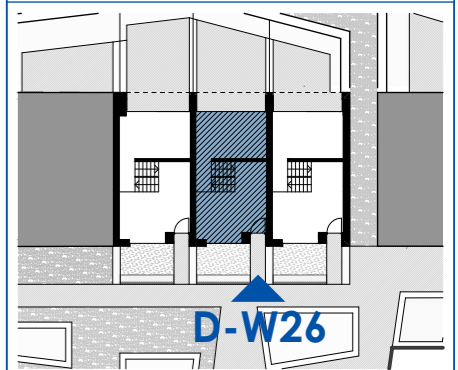
Maßstab: 1:75 Stand: April 2022



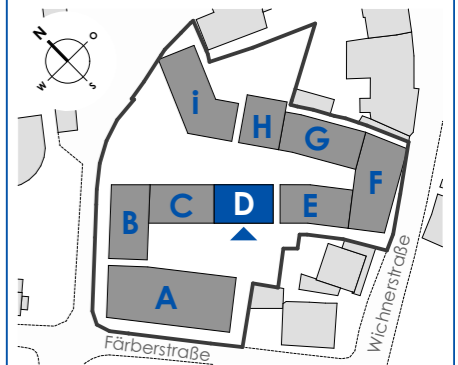
## Top D-W26

Maisonette

Wohnfläche:	71,12m <sup>2</sup>
Untergeschoss:	23,96m <sup>2</sup>
Dachterrasse:	34,93m <sup>2</sup>
Loggia:	5,70m <sup>2</sup>
Vorgarten:	~ 14,04m <sup>2</sup>
Terrasse:	19,12m <sup>2</sup>
Vegetationsfl.:	~ 8,27m <sup>2</sup>



## Haus D



Haberl Baugesellschaft m.b.H  
Hohenemser Straße 17  
6890 Lustenau  
Tel. 0 55 77 8 64 69  
office@haberlbau.at  
www.haberlbau.at

