

Untergeschoss: 23,73m<sup>2</sup>

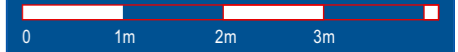
Erdgeschoss: 32,98m<sup>2</sup>

Obergeschoss: 38,14m<sup>2</sup>

Dachterrasse: 33,33m<sup>2</sup>

# Quartier "Brunnenbach" Bludenz

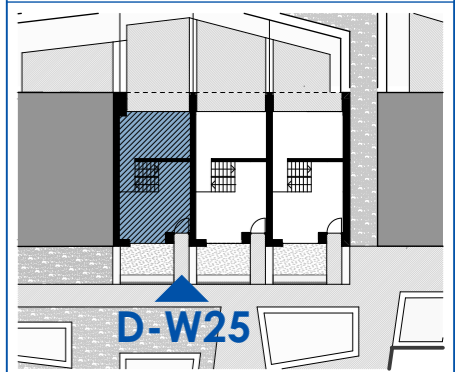
Maßstab: 1:75 Stand: April 2022



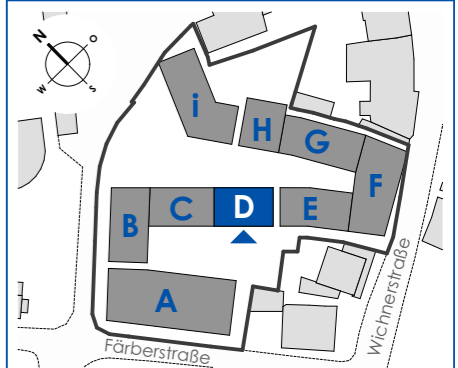
## Top D-W25

Maisonette

Wohnfläche:	71,12m <sup>2</sup>
Untergeschoss:	23,73m <sup>2</sup>
Dachterrasse:	33,33m <sup>2</sup>
Loggia:	5,17m <sup>2</sup>
Vorgarten:	~ 14,04m <sup>2</sup>
Terrasse:	19,38m <sup>2</sup>
Vegetationsfl.:	~ 8,06m <sup>2</sup>



## Haus D



Haberl Baugesellschaft m.b.H  
Hohenemser Straße 17  
6890 Lustenau  
Tel. 0 55 77 8 64 69  
office@haberlbau.at  
www.haberlbau.at

