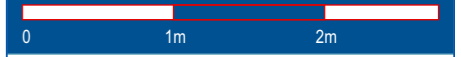


Quartier "Brunnenbach" Bludenz

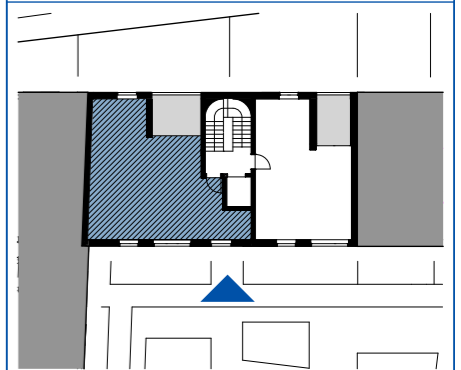
Maßstab: 1:50 Stand: April 2022



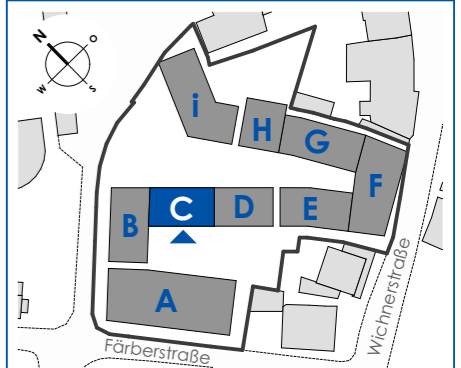
Top C-W23

3 Zimmerwohnung
3. Obergeschoss

Wohnfläche: 64,44m²
Loggia: 7,71m²



Haus C



Haberl Baugesellschaft m.b.H
Hohenemser Straße 17
6890 Lustenau
Tel. 0 55 77 8 64 69
office@haberlbau.at
www.haberlbau.at

