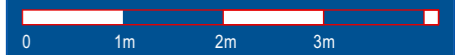


# Quartier "Brunnenbach" Bludenz

Maßstab: 1:75 Stand: April 2022

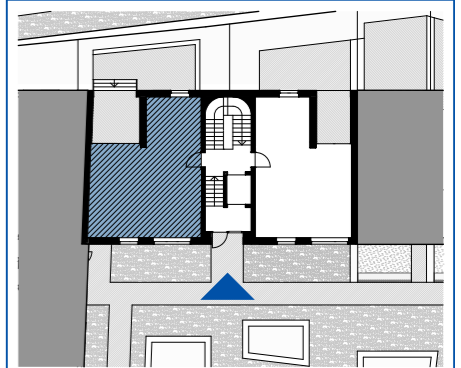


## Top C-W17

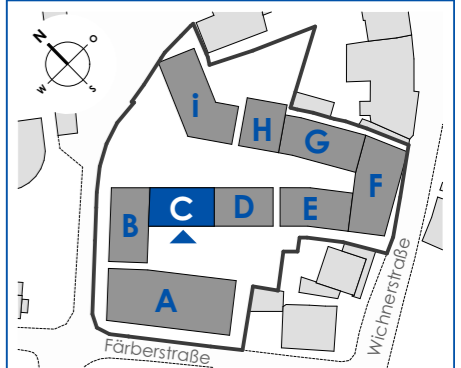
2 Zimmerwohnung  
Erdgeschoss - Hochparterre

Wohnfläche: 53,58m<sup>2</sup>  
Loggia: 10,69m<sup>2</sup>

Terrasse: 16,12m<sup>2</sup>  
Vegetationsfl.: ~ 17,43m<sup>2</sup>



## Haus C



Haberl Baugesellschaft m.b.H  
Hohenemser Straße 17  
6890 Lustenau  
Tel. 0 55 77 8 64 69  
office@haberlbau.at  
www.haberlbau.at

