


Quartier "Brunnenbach" Bludenz

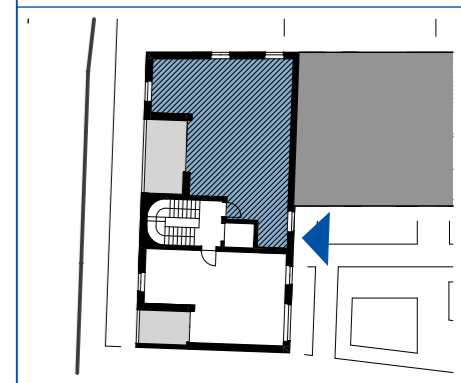
Maßstab: 1:50 Stand: April 2022



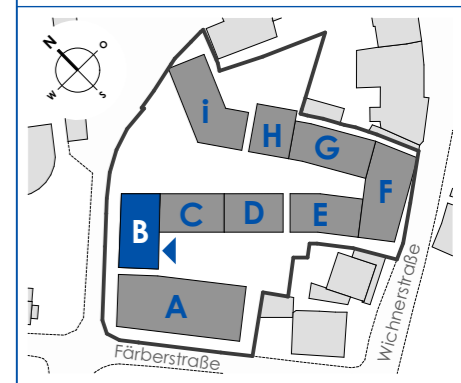
Top B-W12

3 Zimmerwohnung
1. Obergeschoss

Wohnfläche: 75,09m²
Loggia: 12,81m²



Haus B



Haberl Baugesellschaft m.b.H
Hohenemser Straße 17
6890 Lustenau
Tel. 0 55 77 8 64 69
office@haberlbau.at
www.haberlbau.at

