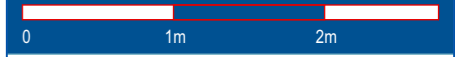


Quartier "Brunnenbach" Bludenz

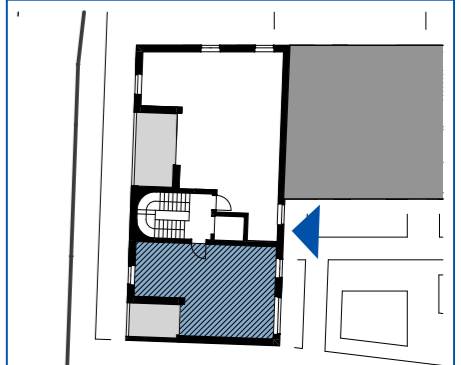
Maßstab: 1:50 Stand: April 2022



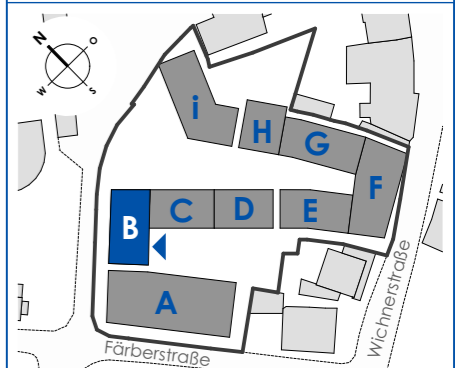
Top B-W11

2 Zimmerwohnung
1.Obergeschoss

Wohnfläche: 46,10m²
Loggia: 7,37m²



Haus B



Haberl Baugesellschaft m.b.H
Hohenemser Straße 17
6890 Lustenau
Tel. 0 55 77 8 64 69
office@haberlbau.at
www.haberlbau.at

